



## REGIONAL SPECIALISED METEOROLOGICAL CENTRE -TROPICAL CYCLONES, NEW DELHI TROPICAL WEATHER OUTLOOK

**DEMS-RSMC TROPICAL CYCLONES NEW DELHI DATED 23.07.2025**

**TROPICAL WEATHER OUTLOOK FOR THE NORTH INDIAN OCEAN (THE BAY OF BENGAL OF BENGAL AND THE ARABIAN SEA) VALID FOR THE NEXT 168 HOURS ISSUED AT 0600 UTC OF 23.07.2025 BASED ON 0300 UTC OF 23.07.2025.**

### **BAY OF BENGAL:**

Yesterday's upper air cyclonic circulation over Coastal Andhra Pradesh & adjoining south Odisha coasts & neighbourhood now lay over westcentral and adjoining northwest Bay of Bengal at 0300 UTC of today, the 23<sup>rd</sup> July, 2025 and extended between 3.1 & 5.8 km above mean sea level.

A cyclonic circulation (Remnant of Tropical Cyclone WIPHA) is likely to emerge over North Bay of Bengal during next 24 hours. Under its influence, a Low Pressure area is likely to form over the same region during subsequent 24 hours.

Scattered to broken low and medium clouds with embedded intense to very intense convection lay over central Bay of Bengal and Andaman Sea. Scattered low and medium clouds with embedded moderate to intense convection lay over rest of Bay of Bengal.

### **\*PROBABILITY OF CYCLOGENESIS (FORMATION OF DEPRESSION) DURING NEXT 168 HRS:**

24 HOURS	24-48 HOURS	48-72 HOURS	72-96 HOURS	96-120 HOURS	120-144 HOURS	144-168 HOURS
NIL	NIL	LOW	LOW	LOW	NIL	NIL

**\*NOTE: EVERY 24HR FORECAST IS VALID UPTO 0300 UTC (0830 IST) OF NEXT DAY**

### **ARABIAN SEA:**

Scattered low and medium clouds with embedded intense to very intense convection lay over southeast Arabian Sea, Lakshadweep Islands area, Maldives & Comorin Area. Scattered low and medium clouds with embedded moderate to intense convection lay over eastcentral Arabian Sea and Weak to moderate convection lay over rest of Arabian Sea.

### **\*PROBABILITY OF CYCLOGENESIS (FORMATION OF DEPRESSION) DURING NEXT 168 HRS:**

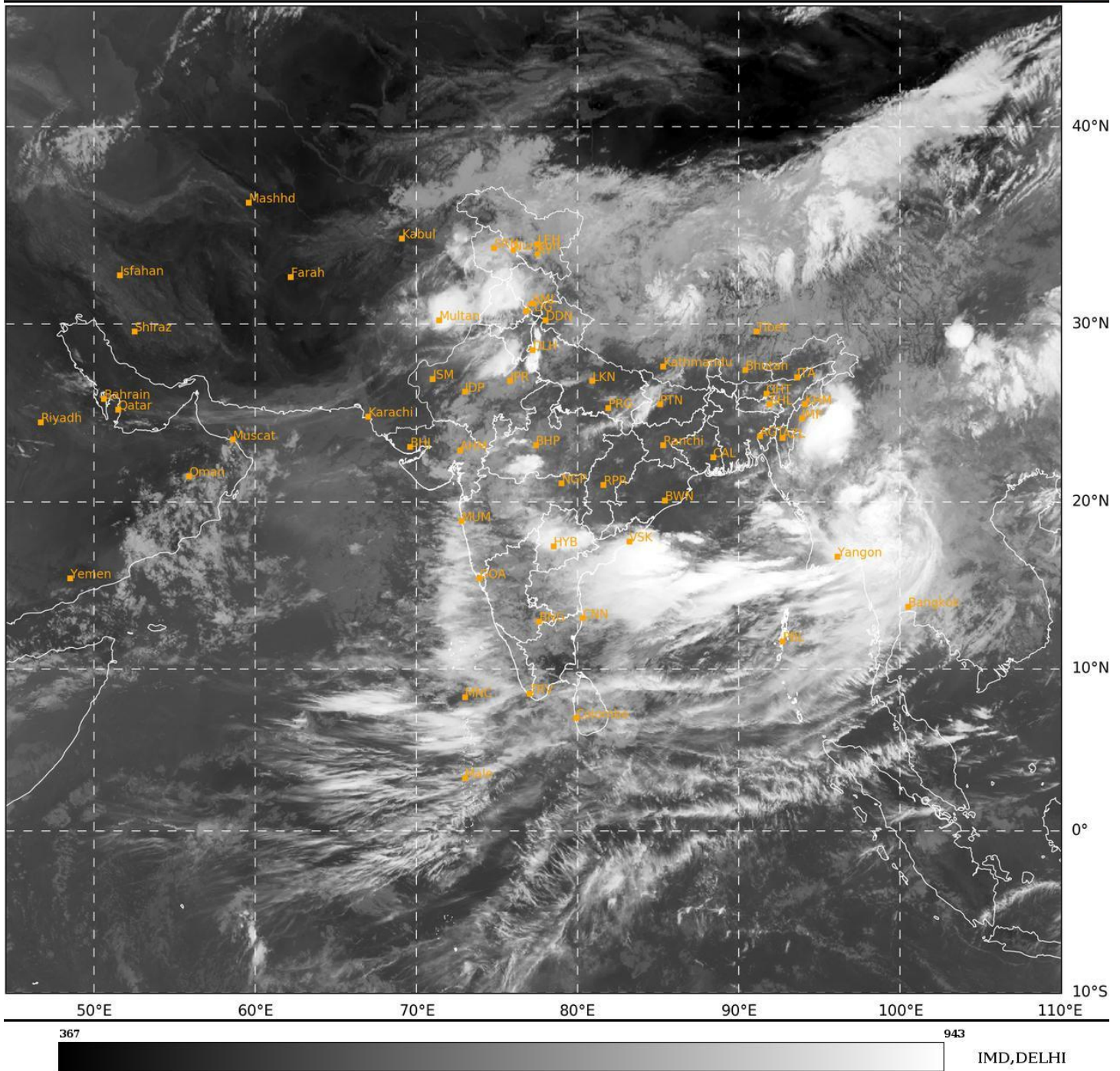
24 HOURS	24-48 HOURS	48-72 HOURS	72-96 HOURS	96-120 HOURS	120-144 HOURS	144-168 HOURS
NIL	NIL	NIL	NIL	NIL	NIL	NIL

**\*NOTE: EVERY 24HR FORECAST IS VALID UPTO 0300 UTC (0830 IST) OF NEXT DAY**

**REMARKS: NIL**

SAT : INSAT-3DR IMG  
IMG\_TIR1 10.8 um  
L1C Mercator

23-07-2025/(0315 to 0341) GMT  
23-07-2025/(0845 to 0911) IST



Cloud distribution: (a) Isolated: <25%, Scattered:25-50%, Broken: 51-75%, Solid:>75%, Convection Intensity: (a) Weak: Cloud Top Temperature(CTT)>-25°C,(b)Moderate:CTT:-25°Cto-40°C,(c)Intense:CTT: -41°Cto -70°Cand(d)Very Intense::Less than -70°C  
PROBABILITYOFCYCLOGENESIS(FORMATIONOFDEPRESSION):NIL:0%,LOW:1-33%,MODERATE:34-66%ANDHIGH:67-100%  
ThisisaguidanceBulletinforWMO/ESCAPPanelMembercountries.VisitrespectiveNationalwebsitesforCountryspecificBulletins